

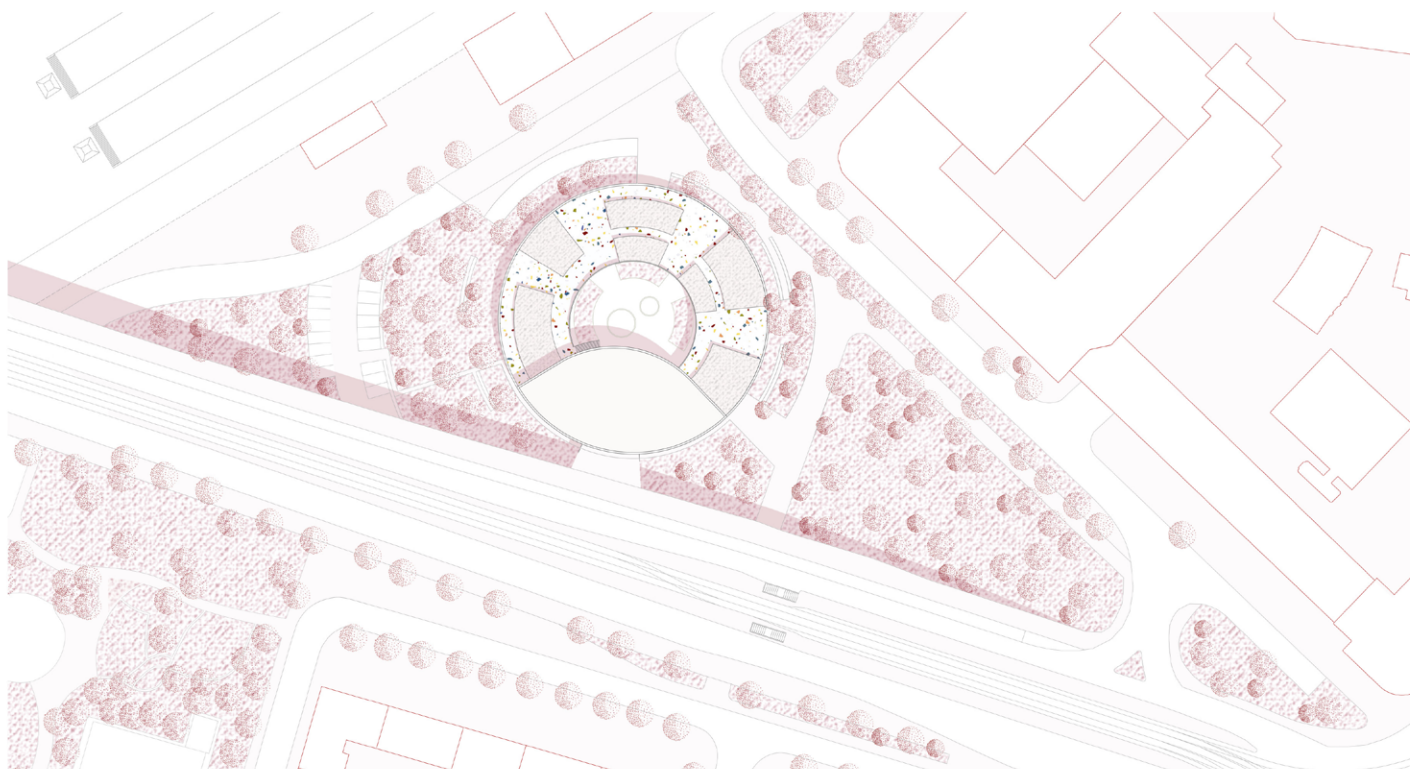


GENERATION HOUSE EIN NEUER DIALOG IN DURLACH

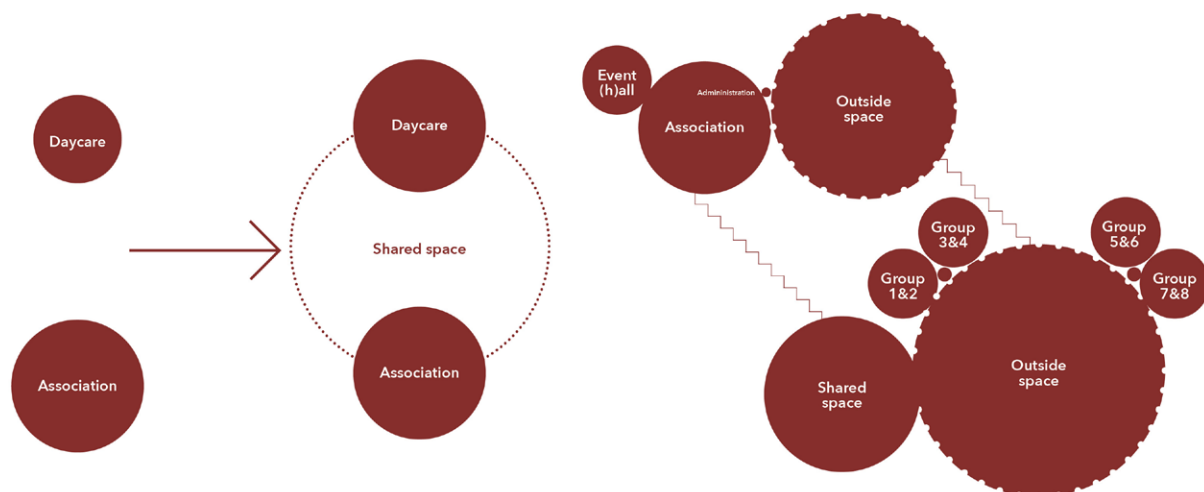
ALICIA DOLDT
PHILIPPE DUGUÉ-BOYER

Durlach ist bei jungen Familien und älteren Menschen überproportional nachgefragt. Ein Dialog zwischen diesen Generationen kann die Identität Durlachs stärken und seine Attraktivität weiter steigern. Das Generation House verbindet eine Kindertagesstätte mit einem kleinen Zentrum für Vereine und Organisationen. Räume für Kreativität, sozialen Austausch und Erholung bieten vielfältige Möglichkeiten, in Kontakt zu kommen. Die Form des Kreises schafft eine harmonische Atmosphäre, gibt Schutz nach außen und bildet Gemeinschaft im Inneren.

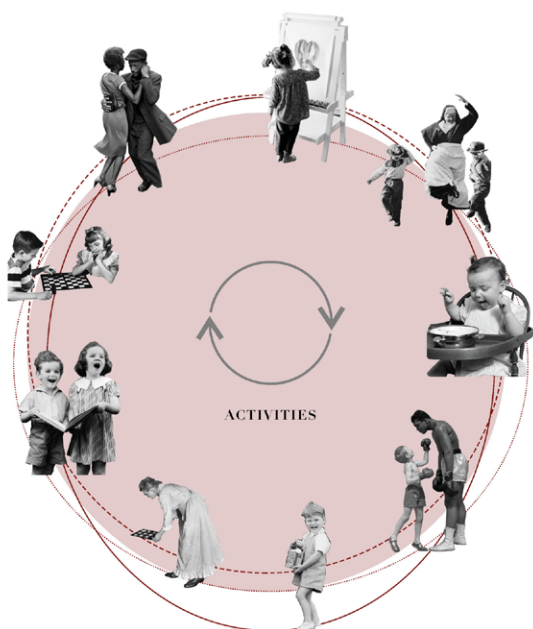
Durlach is disproportionately sought after by young families and elderly people. A new dialogue between these generations strenghtens the identity of Durlach and makes it even more attractive. The Generation House combines a day-care centre with an association house that share spaces for creativity and recreation. These opportunities for contact and collaboration are harmoniously organized in a circle, giving shelter to the outside and community on the inside.



site plan 1:500



program



COMMUNITY
Generations
Cohabitation
Sharing
Familiar



IDENTITY
Homogenate
Life quality
Residential
Discretion



TWO-FACED
In form
In material
Shared activities
Discrete



CIRCLES

Three layers in circled shape are organising the inside spaces

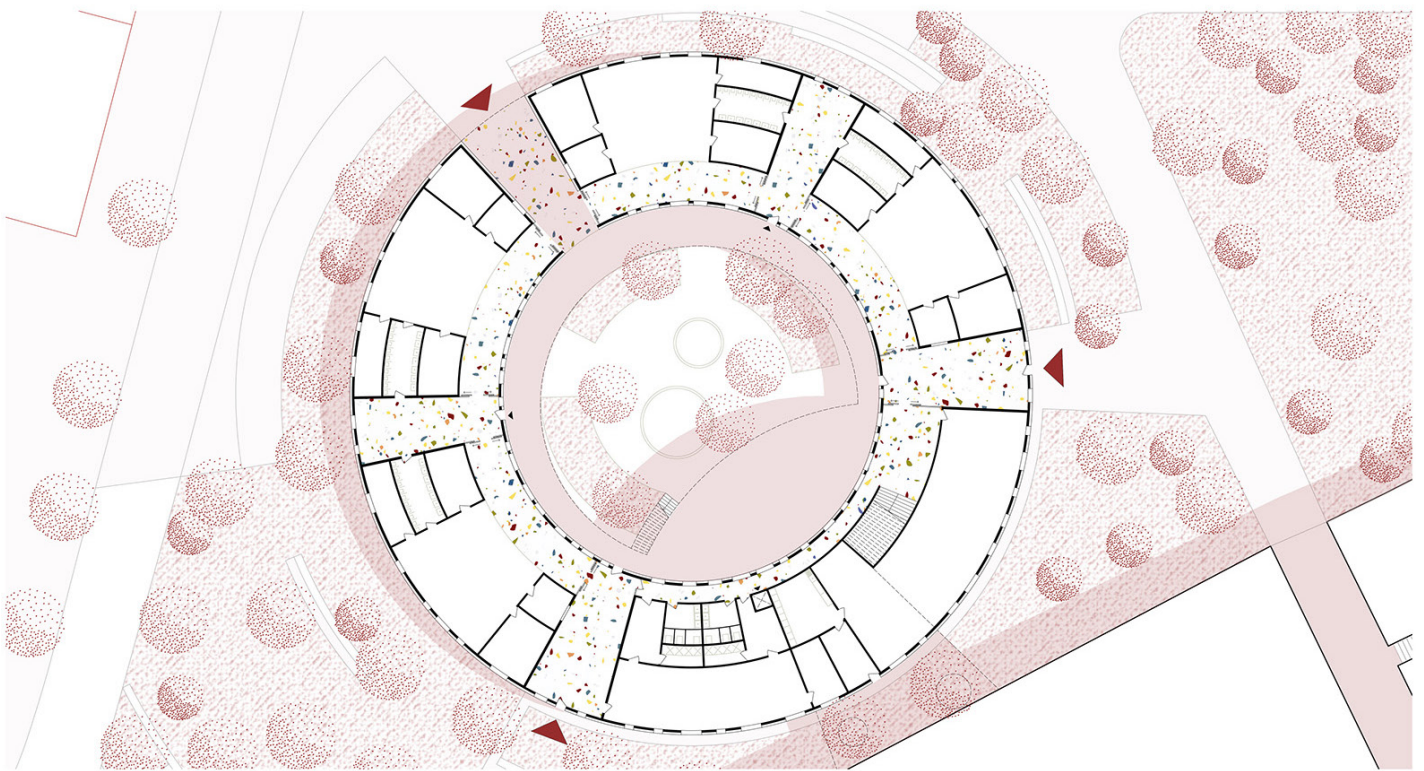


TRANSPARENCY
Multi-purpose rooms
are disposed according
to the view from the
street and the garden

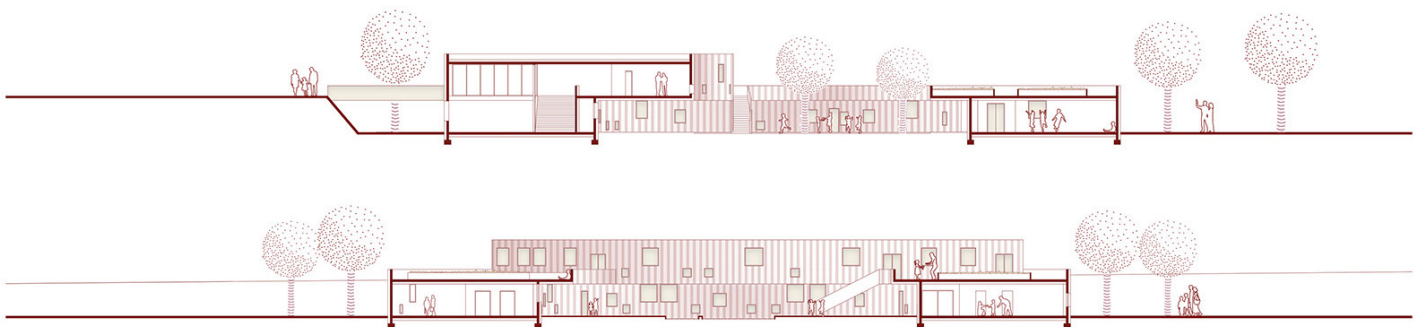


HOMINESS
The inside yard, composed as a cloister, offers a feeling of protection

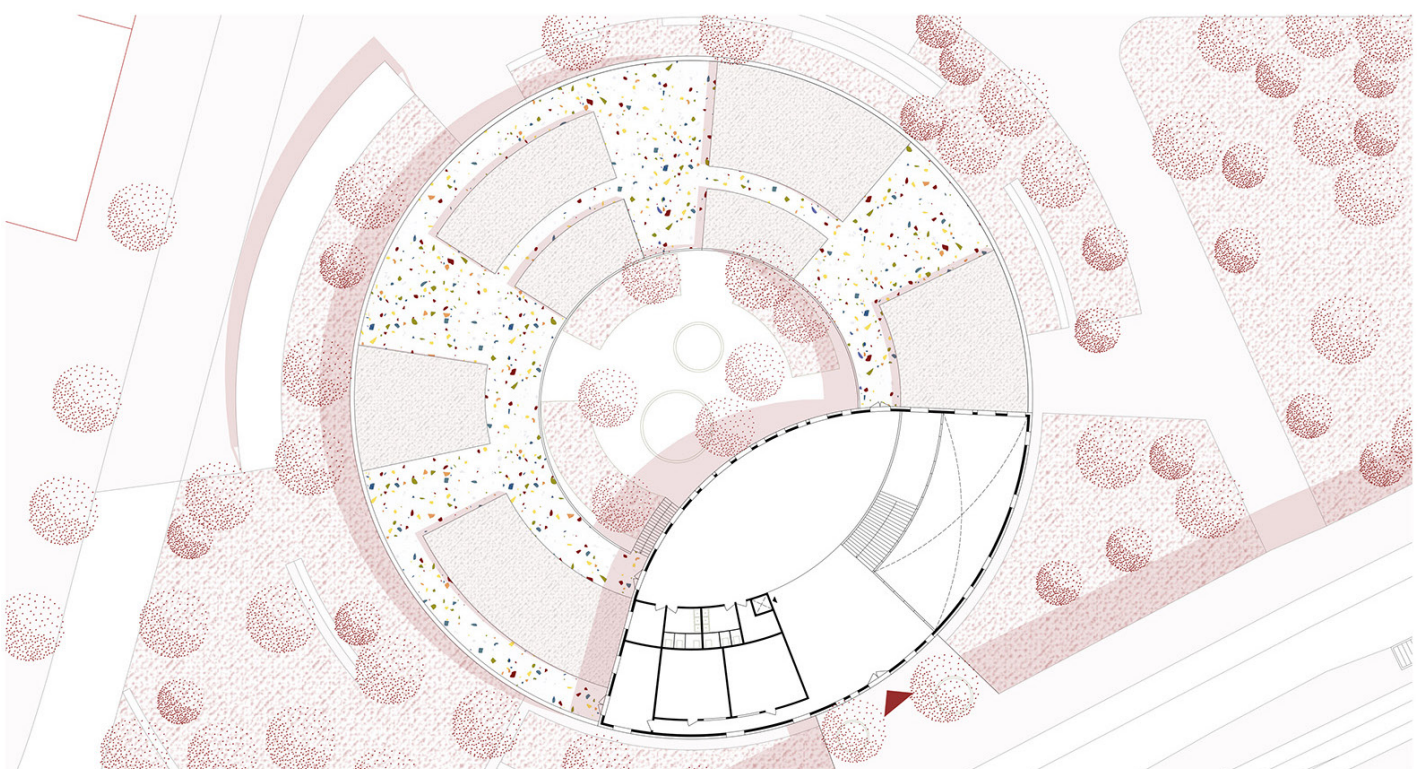
the concept of a multigenerational dialog



ground floor 1:200



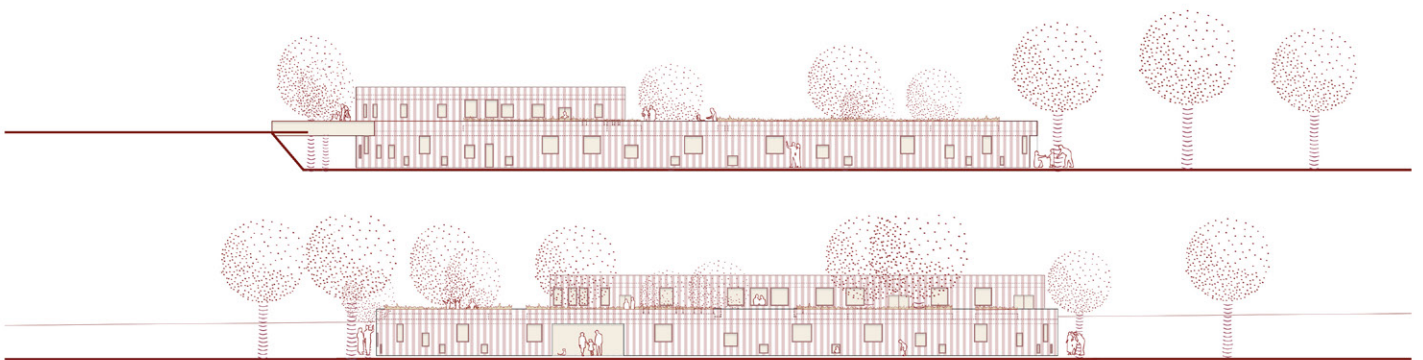
west & north sections 1:200



upper floor 1: 200



Dialogue with the Durlacher train station



west & north elevations 1:200



Dialogue with the Durlacher Allee

